



## **SPRING LAKE PARK SCHOOLS**

### ***Inside***

- Message from Superintendent Ronneberg
- 2019-2020 calendar
- Daily school schedule
- Directory of departments and services
- School district directory and map
- Who We Are: SLP Schools
- Panther Pride
- Our strategic plan for the future
- 2019-2020 operational plan overview



# **2019-2020**

## **RESOURCE GUIDE AND CALENDAR**



1	2	3	4	5	6	7
8	9	10	11	12	13	14
15	16	17	18	19	20	21
22	23	24	25	26	27	28
29	30					



# WELCOME

## TO THE 2019-2020 SCHOOL YEAR

### SPRING LAKE PARK SCHOOLS



#### **First Days of School**

The first day of school for students varies depending on grade levels.

#### **Tuesday, September 3 is the first day of school for:**

- All K-8 students and Lighthouse students
- Orientation for grade 9 students and any grades 10-12 students new to Spring Lake Park High School

#### **Wednesday, September 4 is the first day of school for:**

- Returning grades 10-12 students

Dear Spring Lake Park Schools' Students, Parents and Staff:

The summer months are flying by and we are preparing for the kick-off of another school year in Spring Lake Park Schools. On behalf of each of our dedicated staff members, I want to welcome each of you to our world-class learning community.

The 2019-2020 Resource Guide and Calendar is filled with information about Spring Lake Park Schools that you can use throughout the school year. In addition, there is a wealth of information available on our district and school websites. These websites are updated on a regular basis and include updated calendar information, as well as information about student events and activities, district and school news and more.

In Spring Lake Park Schools, we are committed to personalizing learning so that each young person we work with feels valued and has a sense of belonging while developing the skills necessary to be a self-directed learner.

We want each student to discover and explore their interests, understand their needs and develop the skills necessary to succeed now and in the future. This requires a powerful and effective partnership between home, community and school. As a result, please know that our staff wants, and needs, to hear from you.

If you have questions – now or throughout the school year – contact the schools or departments listed on the following pages, visit [SpringLakeParkSchools.org](http://SpringLakeParkSchools.org) or call the District Services Center at 763-600-5000. Of course, I am always happy to hear from you as well!

Have a great and enjoyable school year!

Jeff Ronneberg, Ed.D  
Superintendent

# SCHOOL BOARD, DISTRICT ADMINISTRATION AND PROGRAM CONTACTS



## SCHOOL BOARD

**Amy Hennen, Chair**  
763-600-5522, ahenne@district16.org

**John Stroebel, Vice Chair**  
763-600-5520, jstroe@district16.org

**Amy Wheaton, Treasurer**  
763-600-5524, awheat@district16.org

**Tony Easter, Clerk**  
763-600-5521, teaste@district16.org

**Jim Amundson, Director**  
763-600-5527, jamund@district16.org

**Marilynn Forsberg, Director**  
763-600-5523, mforsb@district16.org

**Michael Kreun, Director**  
763-600-5526, mkreun@district16.org

## ADMINISTRATION

**Superintendent**  
Dr. Jeff Ronneberg, 763-600-5020,  
jronne@district16.org

**Director of Business Services**  
Amy Schultz, 763-600-5033, aschul@district16.org

**Director of Learning and Innovation**  
Dr. Hope Rahn, 763-600-5027, hrah@district16.org

**Director of Student Services**  
Anthony Mayer, 763-600-5080, amayer@district16.org

**Director of Human Resources & Organizational Development**  
Ryan Stromberg, 763-600-5014, rstrom@district16.org

**Director of Community Education & Outreach**  
Colleen Pederson, 763-600-5051, cpeder@district16.org

**Director of Communication & Marketing**  
To be determined, 763-600-5070

## DEPARTMENT AND PROGRAM CONTACTS

**Athletics and Activities - high school**  
Will Wackman, 763-600-5149, wwackm@district16.org

**Athletics and Activities - middle school**  
763-600-5300

**Buildings and Grounds**  
Doug Stahl, 763-600-5045, dstahl@district16.org

**Community Education, 763-600-5050**

- Registration and billing, 763-600-5050
- Adult Basic Education, Metro North, 763-783-4870
- Adult Enrichment, 763-600-5050
- After School Adventures, 763-600-5056
- Drivers education, 763-600-5050
- Early Childhood Family Education and Preschool, 763-600-5900
- Facilities rental, 763-600-5054
- High school service and youth programs, 763-600-5055
- Pool information, 763-600-5054

**Education Services**  
Hope Rahn, 763-600-5027, hrah@district16.org  
Anthony Mayer, 763-600-5080, amayer@district16.org

**Enrollment Office**  
763-600-5018, enrollment@district16.org

**Gifted Services**  
Kim Fehringer, K-12 Gifted Services coordinator,  
763-600-5000, kfehri@district16.org

Desirae Gillis, GT/STEM specialist, Centerview,  
763-600-5500, dgilli@district16.org

Kevin Koch, GT/STEM specialist, Northpoint,  
763-600-5700, kkoch@district16.org

Curtis Horton, GT/STEM specialist, Park Terrace,  
763-600-5600, chorto@district16.org

Jan Burda, GT/STEM specialist, Woodcrest Spanish Immersion, 763-600-5800, jburda@district16.org

Amanda West, GT/STEM specialist, Westwood,  
763-600-5400, awest@district16.org

**Instructional Technology**  
Jerelyne Nemanich, 763-600-5028,  
jneman@district16.org

**Nutrition Services**  
Amy Kimmel, 763-600-5040, akimme@district16.org

**Technology**  
Steve Halvorson, 763-600-5060, shalvo@district16.org

**Transportation**  
763-600-5590, transportation@district16.org

# SCHOOL CONTACT AND START TIME INFORMATION

## **Centerview Elementary** *(Grades K-4)*

*10365 Davenport Street NE, Blaine, MN 55449*

School hours: 9:20 a.m.-3:55 p.m. / Mike Callahan, Principal, mcalla@district16.org

Main office: 763-600-5500 / Fax: 763-600-5513

Health Care/Attendance: 763-600-5504 / Learning Ventures Child Care: 763-600-5511

## **Early Childhood at Centerview** *(Early Childhood Family Education and Preschool)*

*10365 Davenport Street NE, Blaine, MN 55449*

Early Childhood Office, Early Childhood Family Education, Preschool

Main office: 763-600-5900

## **Northpoint Elementary** *(Grades K-4)*

*2350 124th Court, Blaine, MN 55449*

School hours: 9:20 a.m.-3:55 p.m. / Judi Kahoun, Principal, jkahou@district16.org

Main office: 763-600-5700 / Fax: 763-600-5713

Health Care/Attendance: 763-600-5709 / Learning Ventures Child Care: 763-600-5711

## **Park Terrace Elementary** *(Grades K-4)*

*8301 Terrace Road, Spring Lake Park, MN 55432*

School hours: 9:20 a.m.-3:55 p.m. / Mona Perkins, Principal, mperki@district16.org

Main office: 763-600-5600 / Fax: 763-600-5613

Health Care/Attendance: 763-600-5609 / Learning Ventures Child Care: 763-600-5611

## **Woodcrest Elementary Spanish Immersion** *(Grades K-4)*

*880 Osborne Road, Fridley, MN 55432*

School hours: 9:10 a.m.-3:45 p.m. / Elizabeth Linares, Principal, elinar@district16.org

Main office: 763-600-5800 / Fax: 763-600-5813 / Attendance: 763-600-5809

Health Care: 763-600-5804 / Learning Ventures Child Care: 763-600-5811

## **Westwood Intermediate and Middle School**

*(Grades 5-8)*

*711 91st Avenue NE, Blaine, MN 55434*

School hours: Grades 7-8 - 7:45 a.m.-2:30 p.m., Grades 5-6 - 8:40 a.m.-3:15 p.m.

Tom Larson, Principal, tlarso@district16.org / Megan Jahnke, mjahnk@district16.org

and Tyler Nelson, tnels1@district16.org, Associate Principals

Main office: 763-600-5300 / Fax: 763-600-5313 / Attendance: 763-600-5309

Health Care: 763-600-5304

## **Spring Lake Park High School** *(Grades 9-12)*

*1100 81st Avenue NE, Spring Lake Park, MN 55432*

School hours: 8:10 a.m.-2:55 p.m.

Matthew Boucher, Principal, mbouch@district16.org / Steve Brady, sbrady@district16.org and John Franke, jfrank@district16.org, Associate Principals

Main office: 763-600-5100 / Fax: 763-600-5113 / Attendance: 763-600-5109

Health Care: 763-600-5104 / Student Services Office: 763-600-5131

## **Spring Lake Park Online Learning** *(Grades 9-12)*

*1100 81st Avenue NE, Spring Lake Park, MN 55432*

School hours: flexible / Steve Brady, Associate Principal, sbrady@district16.org

Main office: 763-600-5119

## **Lighthouse School** *for gifted & insatiable learners (Ages 6-18)*

*7925 Able Street NE, Spring Lake Park, MN 55432*

School hours: 8:10 a.m.-3:05 p.m.

Kevin Berdine, Coordinator, kberdi@district16.org

Main office: 763-600-5200

## **District Services Center**

*1415 81st Avenue NE, Spring Lake Park, MN 55432*

School year hours: 7:30 a.m.-5 p.m. / Summer hours: 7:30 a.m.-4 p.m.

Main number: 763-600-5000 / Fax: 763-600-5582

Community Education: 763-600-5050

## **Early Childhood Center at the DSC** *(Early Childhood Family Education and Preschool)*

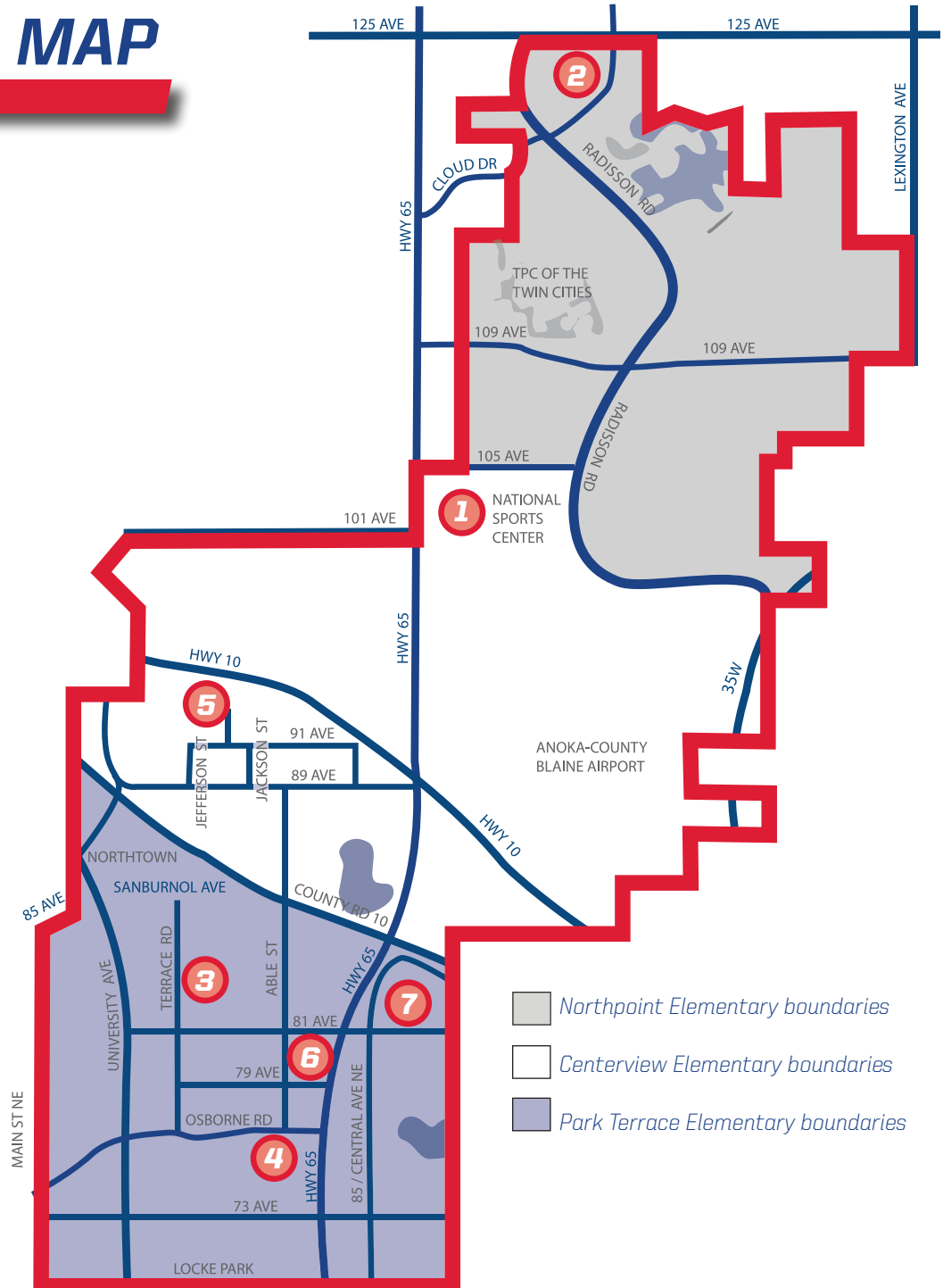
*1415 81st Avenue NE, Spring Lake Park, MN 55432*

Class times vary / Kristin Goessel-Seery, Kgoess@district16.org



# SCHOOL DIRECTORY AND MAP

- 1 Centerview Elementary.....763-600-5500**  
**Early Childhood Center at Centerview .....763-600-5900**  
 10365 Davenport Street NE, Blaine, MN 55449
- 2 Northpoint Elementary .....763-600-5700**  
 2350 124th Court, Blaine, MN 55449
- 3 Park Terrace Elementary .....763-600-5600**  
 8301 Terrace Road, Spring Lake Park, MN 55432
- 4 Woodcrest Spanish Immersion.....763-600-5800**  
 880 Osborne Road, Fridley, MN 55432
- 5 Westwood Intermediate and Middle School ....763-600-5300**  
 711 91st Avenue NE, Blaine, MN 55434
- 6 Spring Lake Park High School .....763-600-5100**  
**High School Athletics and Activities .....763-600-5149**  
 1100 81st Avenue NE, Spring Lake Park, MN 55432  
**Lighthouse School .....763-600-5200**  
 7925 Able Street NE, Spring Lake Park, MN 55432
- 7 District Services Center.....763-600-5000**  
**Community Education.....763-600-5050**  
**Early Childhood Center at the DSC .....763-600-5900**  
 1415 81st Avenue NE, Spring Lake Park, MN 55432



- Northpoint Elementary boundaries
- Centerview Elementary boundaries
- Park Terrace Elementary boundaries



### ***We are Panther Proud!***

*Our vision to have every student prepared for college is bold and aspirational. We are collectively committed to taking whatever actions are necessary every day to design engaging learning experiences for each student.*

*Our district purpose - "High expectations, high achievement for all. No excuses." - provides our focus to meet the unique and varied needs of each student.*

*Our Strategic Plan for the Future is the road map that we follow in our continuing and measurable focus on success for all students. The strategic plan is developed and approved by the school board and provides overall direction for the district's work.*

*Adaptive planning is at the foundation of our work. Rather than having a static strategic plan that attempts to identify strategies and objectives into the future, our plan is reviewed quarterly and adjusted when necessary to address emerging issues.*

# **AUGUST 2019**

<i>Sunday</i>	<i>Monday</i>	<i>Tuesday</i>	<i>Wednesday</i>	<i>Thursday</i>	<i>Friday</i>	<i>Saturday</i>																																																																																				
<i>July 2019</i> <table> <tr><td>S</td><td>M</td><td>T</td><td>W</td><td>T</td><td>F</td><td>S</td></tr> <tr><td></td><td>1</td><td>2</td><td>3</td><td>4</td><td>5</td><td>6</td></tr> <tr><td>7</td><td>8</td><td>9</td><td>10</td><td>11</td><td>12</td><td>13</td></tr> <tr><td>14</td><td>15</td><td>16</td><td>17</td><td>18</td><td>19</td><td>20</td></tr> <tr><td>21</td><td>22</td><td>23</td><td>24</td><td>25</td><td>26</td><td>27</td></tr> <tr><td>28</td><td>29</td><td>30</td><td>31</td><td></td><td></td><td></td></tr> </table>		S	M	T	W	T	F	S		1	2	3	4	5	6	7	8	9	10	11	12	13	14	15	16	17	18	19	20	21	22	23	24	25	26	27	28	29	30	31				<i>September 2019</i> <table> <tr><td>S</td><td>M</td><td>T</td><td>W</td><td>T</td><td>F</td><td>S</td></tr> <tr><td>1</td><td>2</td><td>3</td><td>4</td><td>5</td><td>6</td><td>7</td></tr> <tr><td>8</td><td>9</td><td>10</td><td>11</td><td>12</td><td>13</td><td>14</td></tr> <tr><td>15</td><td>16</td><td>17</td><td>18</td><td>19</td><td>20</td><td>21</td></tr> <tr><td>22</td><td>23</td><td>24</td><td>25</td><td>26</td><td>27</td><td>28</td></tr> <tr><td>29</td><td>30</td><td></td><td></td><td></td><td></td><td></td></tr> </table>		S	M	T	W	T	F	S	1	2	3	4	5	6	7	8	9	10	11	12	13	14	15	16	17	18	19	20	21	22	23	24	25	26	27	28	29	30						<b>1</b>	<b>2</b>	<b>3</b>
S	M	T	W	T	F	S																																																																																				
	1	2	3	4	5	6																																																																																				
7	8	9	10	11	12	13																																																																																				
14	15	16	17	18	19	20																																																																																				
21	22	23	24	25	26	27																																																																																				
28	29	30	31																																																																																							
S	M	T	W	T	F	S																																																																																				
1	2	3	4	5	6	7																																																																																				
8	9	10	11	12	13	14																																																																																				
15	16	17	18	19	20	21																																																																																				
22	23	24	25	26	27	28																																																																																				
29	30																																																																																									
<b>4</b>	<b>5</b>	<b>6</b>	<b>7</b>	<b>8</b>	<b>9</b>	<b>10</b>																																																																																				
<b>11</b>	<b>12</b> HS fall sports begin	<b>13</b> School Board Regular Meeting, 7 p.m., DSC	<b>14</b>	<b>15</b>	<b>16</b>	<b>17</b>																																																																																				
<b>18</b>	<b>19</b>	<b>20</b>	<b>21</b>	<b>22</b>	<b>23</b>	<b>24</b>																																																																																				
<b>25</b>	<b>26</b> Staff professional workday Child care closed	<b>27</b> Staff professional workday Meet and greets: HS: 2-6 p.m. WW Grades 5 and 6: 4:30-7 p.m. Child care closed	<b>28</b> Staff professional workday Meet and greets: CV, NP, PT, WC: 4:30-6:30 p.m. LH: 4-6 p.m. WW Grades 7 and 8: 4:30-7 p.m. Child care closed	<b>29</b> Staff professional workday Child care closed	<b>30</b> Child care closed	<b>31</b>																																																																																				

**CALENDAR KEY** **CV** Centerview Elementary **DSC** District Services Center **ECFE** Early Childhood Family Education **FAC** Fine Arts Center **HS** Spring Lake Park High School **LH** Lighthouse School  
**NP** Northpoint Elementary **PS** Preschool **PT** Park Terrace Elementary **WC** Woodcrest Spanish Immersion **WW** Westwood Intermediate and Middle School  
Visit [SpringLakeParkSchools.org/calendar](http://SpringLakeParkSchools.org/calendar) for a calendar specific to your school or program.





## ***We are Panther Proud!***

*All preschool-12th grade students participate in learning experiences that foster higher-order thinking, substantive conversations and connections to the world beyond the classroom.*

*Our 3D Design model is a process that district staff use to improve and transform what we do and how we do it. The model is based on human-centered design, which means we think about and incorporate insight from users and customers in the design process.*

*We created "My SLP Idea" to encourage staff to generate ideas and bring them forward for consideration. Our leaders find ways to say yes and encourage innovation. In response to new ideas, we find ways to say, "just do it," "let's try it," or "let's build it" as part of our culture of innovation.*

*We are transforming our learning spaces from traditional classrooms to flexible spaces that are more conducive to active, hands-on learning.*

# ***SEPTEMBER 2019***



<i>Sunday</i>	<i>Monday</i>	<i>Tuesday</i>	<i>Wednesday</i>	<i>Thursday</i>	<i>Friday</i>	<i>Saturday</i>																																																																																				
<b>1</b>	<b>2</b> Labor Day DSC closed Child care closed	<b>3</b> First day of school for grades K-8 and Lighthouse  Orientation for grade 9 students and grades 10-12 students new to the HS  PS orientation week  Fall MAP assessment window opens, grade 2	<b>4</b> First day of school for returning grades 10-12 students who are not new to the HS  PS orientation week	<b>5</b> PS orientation week	<b>6</b> PS orientation week	<b>7</b>																																																																																				
<b>8</b>	<b>9</b> PS and ECFE classes begin	<b>10</b> School Board Regular Meeting, 7 p.m., DSC	<b>11</b>	<b>12</b>	<b>13</b>	<b>14</b>																																																																																				
<b>15</b>	<b>16</b>	<b>17</b>	<b>18</b>	<b>19</b>	<b>20</b>	<b>21</b>																																																																																				
<b>22</b>	<b>23</b>	<b>24</b>	<b>25</b>	<b>26</b>	<b>27</b>	<b>28</b> Panther Foundation Carnival and 5K, HS																																																																																				
<b>29</b>	<b>30</b> Fall ACT Aspire assessment window opens, grades 8, 9 and 10  <b>HOMECOMING WEEK</b>	<div> <div> August 2019 </div> <div> <table> <tr><td>S</td><td>M</td><td>T</td><td>W</td><td>T</td><td>F</td><td>S</td></tr> <tr><td></td><td></td><td></td><td></td><td>1</td><td>2</td><td>3</td></tr> <tr><td>4</td><td>5</td><td>6</td><td>7</td><td>8</td><td>9</td><td>10</td></tr> <tr><td>11</td><td>12</td><td>13</td><td>14</td><td>15</td><td>16</td><td>17</td></tr> <tr><td>18</td><td>19</td><td>20</td><td>21</td><td>22</td><td>23</td><td>24</td></tr> <tr><td>25</td><td>26</td><td>27</td><td>28</td><td>29</td><td>30</td><td>31</td></tr> </table> </div> <div> October 2019 </div> <div> <table> <tr><td>S</td><td>M</td><td>T</td><td>W</td><td>T</td><td>F</td><td>S</td></tr> <tr><td></td><td></td><td></td><td></td><td>1</td><td>2</td><td>3</td></tr> <tr><td>4</td><td>5</td><td>6</td><td>7</td><td>8</td><td>9</td><td>10</td></tr> <tr><td>11</td><td>12</td><td>13</td><td>14</td><td>15</td><td>16</td><td>17</td></tr> <tr><td>18</td><td>19</td><td>20</td><td>21</td><td>22</td><td>23</td><td>24</td></tr> <tr><td>25</td><td>26</td><td>27</td><td>28</td><td>29</td><td>30</td><td>31</td></tr> </table> </div> </div>					S	M	T	W	T	F	S					1	2	3	4	5	6	7	8	9	10	11	12	13	14	15	16	17	18	19	20	21	22	23	24	25	26	27	28	29	30	31	S	M	T	W	T	F	S					1	2	3	4	5	6	7	8	9	10	11	12	13	14	15	16	17	18	19	20	21	22	23	24	25	26	27	28	29	30	31
S	M	T	W	T	F	S																																																																																				
				1	2	3																																																																																				
4	5	6	7	8	9	10																																																																																				
11	12	13	14	15	16	17																																																																																				
18	19	20	21	22	23	24																																																																																				
25	26	27	28	29	30	31																																																																																				
S	M	T	W	T	F	S																																																																																				
				1	2	3																																																																																				
4	5	6	7	8	9	10																																																																																				
11	12	13	14	15	16	17																																																																																				
18	19	20	21	22	23	24																																																																																				
25	26	27	28	29	30	31																																																																																				

**CALENDAR KEY** **CV** Centerview Elementary **DSC** District Services Center **ECFE** Early Childhood Family Education **FAC** Fine Arts Center **HS** Spring Lake Park High School **LH** Lighthouse School  
**NP** Northpoint Elementary **PS** Preschool **PT** Park Terrace Elementary **WC** Woodcrest Spanish Immersion **WW** Westwood Intermediate and Middle School  
Visit [SpringLakeParkSchools.org/calendar](http://SpringLakeParkSchools.org/calendar) for a calendar specific to your school or program.



## ***We are Panther Proud!***

*The annual District Operational Plan (DOP) is the “how” of the strategic plan and identifies projects that help to move us toward our vision. Our planning process allows us to have a long-term view while continually assessing our work.*

*Innovation and doing things differently is an integral part of our district. We continue to create a systemic culture of innovation among all district staff members through implementing design thinking processes.*

*Our district is working to create powerful learners, not just good students. Powerful learners can connect learning to any situation and know how to find and use knowledge to address issues and solve problems.*

*Aspirations for average? Not in Spring Lake Park Schools! We are continually looking toward what else is possible and how might we improve and enhance learning for each student.*

# ***OCTOBER 2019***

Sunday	Monday	Tuesday	Wednesday	Thursday	Friday	Saturday
<i>September 2019</i> S M T W T F S 1 2 3 4 5 6 7 8 9 10 11 12 13 14 15 16 17 18 19 20 21 22 23 24 25 26 27 28 29 30		<b>1</b> HS winter sports online registration opens	<b>2</b>	<b>3</b>	<b>4</b> Homecoming tailgate party parade, 4:30-6:30 p.m.  Homecoming football game, 7 p.m., Panther Stadium  Fall MAP assessment window closes, grade 2	<b>5</b>
<i>November 2019</i> S M T W T F S 1 2 3 4 5 6 7 8 9 10 11 12 13 14 15 16 17 18 19 20 21 22 23 24 25 26 27 28 29 30		<b>HOMECOMING WEEK   GET OUT AND SHOW YOUR PANTHER PRIDE!</b>				
<b>6</b>	<b>7</b>	<b>8</b> School Board Regular Meeting, 7 p.m., DSC	<b>9</b>	<b>10</b>	<b>11</b>	<b>12</b>
<b>13</b>	<b>14</b> Staff professional workday Child care open	<b>15</b> Staff professional workday Child care open	<b>16</b> Staff professional workday Child care open PSAT, grades 10 and 11	<b>17</b> Child care open	<b>18</b> Child care closed DSC closed	<b>19</b>
<b>FALL BREAK   No school, PS or ECFE</b>						
<b>20</b>	<b>21</b>	<b>22</b>	<b>23</b>	<b>24</b>	<b>25</b>	<b>26</b>
<b>27</b>	<b>28</b>	<b>29</b>	<b>30</b>	<b>31</b>	<b>FALL CONFERENCES WILL BE HELD THE WEEKS OF OCTOBER 14 AND 21.</b>  Visit <a href="http://SpringLakeParkSchools.org">SpringLakeParkSchools.org</a> for your school's schedule.	

**CALENDAR KEY** CV Centerview Elementary DSC District Services Center ECFE Early Childhood Family Education FAC Fine Arts Center HS Spring Lake Park High School LH Lighthouse School NP Northpoint Elementary PS Preschool PT Park Terrace Elementary WC Woodcrest Spanish Immersion WW Westwood Intermediate and Middle School  
Visit [SpringLakeParkSchools.org/calendar](http://SpringLakeParkSchools.org/calendar) for a calendar specific to your school or program.



**SPRING LAKE PARK SCHOOLS**

### ***We are Panther Proud!***

*Our focus on personalized learning allows students to have greater choice in how they learn and allows them to take ownership of their learning.*

*Many of our parents describe our district as a family. We are large enough to offer many learning opportunities for each student and small enough to focus on the learning of each student.*

*Our parents and community members are actively engaged in our district and have demonstrated their continued support for the district for many years.*

*Each student who is not yet at grade level standards is engaged in rigorous core and targeted reading, is given extra time to learn with a highly effective teacher, and formative data allows for real-time adjustments to learning and teaching.*

# ***NOVEMBER 2019***



Sunday	Monday	Tuesday	Wednesday	Thursday	Friday	Saturday
<i>October 2019</i> S M T W T F S  1 2 3 4 5 6 7 8 9 10 11 12 13 14 15 16 17 18 19 20 21 22 23 24 25 26 27 28 29 30 31		<i>December 2019</i> S M T W T F S  1 2 3 4 5 6 7 8 9 10 11 12 13 14 15 16 17 18 19 20 21 22 23 24 25 26 27 28 29 30 31			<b>1</b>	<b>2</b> HS theater, <i>You Can't Take It with You</i> , FAC
<b>3</b> HS theater, <i>You Can't Take It with You</i> , FAC	<b>4</b>	<b>5</b> School Board Referendum and Election	<b>6</b>	<b>7</b>	<b>8</b> HS theater, <i>You Can't Take It with You</i> , FAC	<b>9</b> HS theater, <i>You Can't Take It with You</i> , FAC
<b>10</b>	<b>11</b>	<b>12</b> School Board Regular Meeting, 7 p.m., DSC	<b>13</b>	<b>14</b>	<b>15</b>	<b>16</b>
<b>17</b>	<b>18</b>	<b>19</b>	<b>20</b>	<b>21</b> Grades 7-8 theater, <i>The Little Princess</i> , FAC	<b>22</b> Grades 7-8 theater, <i>The Little Princess</i> , FAC  Fall ACT Aspire assessment window closes, grades 8, 9 and 10	<b>23</b> Grades 7-8 theater, <i>The Little Princess</i> , FAC
<b>24</b>	<b>25</b> No ECCE classes	<b>26</b> End of Trimester 1  No ECCE classes	<b>27</b> No school, ECCE or PS  Staff professional workday  Child care open	<b>28</b> Thanksgiving Day  No school, ECCE or PS  DSC closed  Child care closed	<b>29</b> No school, ECCE or PS  DSC closed  Child care closed	<b>30</b>

**CALENDAR KEY** CV Centerview Elementary DSC District Services Center ECCE Early Childhood Family Education FAC Fine Arts Center HS Spring Lake Park High School LH Lighthouse School NP Northpoint Elementary PS Preschool PT Park Terrace Elementary WC Woodcrest Spanish Immersion WW Westwood Intermediate and Middle School  
Visit [SpringLakeParkSchools.org/calendar](http://SpringLakeParkSchools.org/calendar) for a calendar specific to your school or program.



## ***We are Panther Proud!***

*We are focused on competency-based learning, which puts learning at the center and ensures that each student learns the academic, career and life skills they need to be successful both now and in the future.*

*Key components in our approach to competency-based learning are to use time flexibly, allow students more time to learn, and provide more than one way or opportunity for students to demonstrate learning.*

*We are developing learner profiles and personal learner maps for each student to allow our teachers to deeply know where each student is at in their learning, where each student is going and what the next step is in the learning for each student.*

*Our district created a Career and College Readiness Continuum to deepen efforts to create college readiness and the academic, life and career skills crucial for student success.*

# ***DECEMBER 2019***

<i>Sunday</i>	<i>Monday</i>	<i>Tuesday</i>	<i>Wednesday</i>	<i>Thursday</i>	<i>Friday</i>	<i>Saturday</i>																																																																																				
<b>1</b>	<b>2</b> No school or PS Child care open Staff professional workday	<b>3</b>	<b>4</b>	<b>5</b> Grades 5-6 theater, <i>And Justice for Pigs: Revenge of the Bad Guys</i> , FAC	<b>6</b> Grades 5-6 theater, <i>And Justice for Pigs: Revenge of the Bad Guys</i> , FAC	<b>7</b>																																																																																				
<b>8</b>	<b>9</b>	<b>10</b>	<b>11</b>	<b>12</b>	<b>13</b>	<b>14</b>																																																																																				
<b>15</b>	<b>16</b>	<b>17</b> School Board Regular Meeting, 7 p.m., DSC	<b>18</b>	<b>19</b>	<b>20</b>	<b>21</b>																																																																																				
<b>22</b>	<b>23</b> Child care open	<b>24</b> Child care closed DSC closed	<b>25</b> Child care closed DSC closed	<b>26</b> Child care open	<b>27</b> Child care open	<b>28</b>																																																																																				
	<b>WINTER BREAK</b>   No school, PS or ECFE																																																																																									
<b>29</b>	<b>30</b> No school, ECFE or PS Child care open	<b>31</b> No school, ECFE or PS Child care closed	<div> <div>November 2019</div> <table> <tr><td>S</td><td>M</td><td>T</td><td>W</td><td>T</td><td>F</td><td>S</td></tr> <tr><td></td><td></td><td></td><td></td><td></td><td>1</td><td>2</td></tr> <tr><td>3</td><td>4</td><td>5</td><td>6</td><td>7</td><td>8</td><td>9</td></tr> <tr><td>10</td><td>11</td><td>12</td><td>13</td><td>14</td><td>15</td><td>16</td></tr> <tr><td>17</td><td>18</td><td>19</td><td>20</td><td>21</td><td>22</td><td>23</td></tr> <tr><td>24</td><td>25</td><td>26</td><td>27</td><td>28</td><td>29</td><td>30</td></tr> </table> </div> <div> <div>January 2020</div> <table> <tr><td>S</td><td>M</td><td>T</td><td>W</td><td>T</td><td>F</td><td>S</td></tr> <tr><td></td><td></td><td></td><td></td><td>1</td><td>2</td><td>3</td></tr> <tr><td>4</td><td>5</td><td>6</td><td>7</td><td>8</td><td>9</td><td>10</td></tr> <tr><td>11</td><td>12</td><td>13</td><td>14</td><td>15</td><td>16</td><td>17</td></tr> <tr><td>18</td><td>19</td><td>20</td><td>21</td><td>22</td><td>23</td><td>24</td></tr> <tr><td>25</td><td>26</td><td>27</td><td>28</td><td>29</td><td>30</td><td>31</td></tr> </table> </div>				S	M	T	W	T	F	S						1	2	3	4	5	6	7	8	9	10	11	12	13	14	15	16	17	18	19	20	21	22	23	24	25	26	27	28	29	30	S	M	T	W	T	F	S					1	2	3	4	5	6	7	8	9	10	11	12	13	14	15	16	17	18	19	20	21	22	23	24	25	26	27	28	29	30	31
S	M	T	W	T	F	S																																																																																				
					1	2																																																																																				
3	4	5	6	7	8	9																																																																																				
10	11	12	13	14	15	16																																																																																				
17	18	19	20	21	22	23																																																																																				
24	25	26	27	28	29	30																																																																																				
S	M	T	W	T	F	S																																																																																				
				1	2	3																																																																																				
4	5	6	7	8	9	10																																																																																				
11	12	13	14	15	16	17																																																																																				
18	19	20	21	22	23	24																																																																																				
25	26	27	28	29	30	31																																																																																				

**CALENDAR KEY** CV Centerview Elementary DSC District Services Center ECFE Early Childhood Family Education FAC Fine Arts Center HS Spring Lake Park High School LH Lighthouse School  
NP Northpoint Elementary PS Preschool PT Park Terrace Elementary WC Woodcrest Spanish Immersion WW Westwood Intermediate and Middle School  
Visit [SpringLakeParkSchools.org/calendar](http://SpringLakeParkSchools.org/calendar) for a calendar specific to your school or program.





## ***We are Panther Proud!***

*Our goal is for each student to earn 12 college credits by the end of 12th grade through multiple pathways including embedded college courses, Advanced Placement courses, career and technical education programming, and College in the Schools courses.*

*Our Lighthouse School provides an enriched learning environment for highly gifted and insatiable learners ages 6-18. The school's inquiry-based model of learning allows each student to take charge of their own learning.*

*The Career and College Pathways are designed to give Spring Lake Park High School students an edge, regardless of the path they choose after high school. The goal is to provide opportunities for students to apply learning in different career fields.*

*Woodcrest Spanish Immersion is a K-4 school and is a model immersion program for other districts beginning their own programs.*

# ***JANUARY 2020***



Sunday	Monday	Tuesday	Wednesday	Thursday	Friday	Saturday																																										
<p><i>December 2019</i></p> <table> <tr><td>S</td><td>M</td><td>T</td><td>W</td><td>T</td><td>F</td><td>S</td></tr> <tr><td>1</td><td>2</td><td>3</td><td>4</td><td>5</td><td>6</td><td>7</td></tr> <tr><td>8</td><td>9</td><td>10</td><td>11</td><td>12</td><td>13</td><td>14</td></tr> <tr><td>15</td><td>16</td><td>17</td><td>18</td><td>19</td><td>20</td><td>21</td></tr> <tr><td>22</td><td>23</td><td>24</td><td>25</td><td>26</td><td>27</td><td>28</td></tr> <tr><td>29</td><td>30</td><td>31</td><td></td><td></td><td></td><td></td></tr> </table>			S	M	T	W	T	F	S	1	2	3	4	5	6	7	8	9	10	11	12	13	14	15	16	17	18	19	20	21	22	23	24	25	26	27	28	29	30	31					<p><b>1</b></p> <p>Winter break</p> <p>No school, ECFE or PS</p> <p>DSC closed</p> <p>Child care closed</p>	<b>2</b>	<b>3</b>	<b>4</b>
S	M	T	W	T	F	S																																										
1	2	3	4	5	6	7																																										
8	9	10	11	12	13	14																																										
15	16	17	18	19	20	21																																										
22	23	24	25	26	27	28																																										
29	30	31																																														
<b>5</b>	<b>6</b>	<b>7</b>	<b>8</b>	<b>9</b>	<b>10</b>	<b>11</b>																																										
<b>12</b>	<b>13</b>	<p><b>14</b></p> <p>School Board Regular Meeting, 7 p.m., DSC</p>	<b>15</b>	<b>16</b>	<p><b>17</b></p> <p>HS theater, One Act Play, FAC</p>	<p><b>18</b></p> <p>HS theater, One Act Play, FAC</p>																																										
<b>19</b>	<p><b>20</b></p> <p>No school, ECFE or PS</p> <p>DSC closed</p> <p>Child care closed</p>	<p><b>21</b></p> <p>No ECFE classes</p>	<p><b>22</b></p> <p>No ECFE classes</p>	<p><b>23</b></p> <p>No ECFE classes</p>	<p><b>24</b></p> <p>No ECFE classes</p>	<b>25</b>																																										
<b>26</b>	<b>27</b>	<b>28</b>	<b>29</b>	<b>30</b>	<b>31</b>																																											

**CALENDAR KEY** **CV** Centerview Elementary **DSC** District Services Center **ECFE** Early Childhood Family Education **FAC** Fine Arts Center **HS** Spring Lake Park High School **LH** Lighthouse School  
**NP** Northpoint Elementary **PS** Preschool **PT** Park Terrace Elementary **WC** Woodcrest Spanish Immersion **WW** Westwood Intermediate and Middle School  
Visit [SpringLakeParkSchools.org/calendar](http://SpringLakeParkSchools.org/calendar) for a calendar specific to your school or program.



## ***We are Panther Proud!***

*Students in Pathways courses gain real-world experience while also preparing for their personal post-high school journey, whether they choose a career and technical program, associate degree, certification, four-year college degree, or employment.*

*Opportunities in Emergency Care (OEC) is an award-winning medical education program within our Health Sciences and Human Services pathway that offers extensive opportunities for high school students interested in the healthcare field.*

*Early Childhood Family Education classes help guide parents through their child's stages of development, build positive parent-child relationships and prepare children to be successful in kindergarten and beyond.*

*Our Online Learning Program at Spring Lake Park High School provides alternative ways to learn for students interested in online education.*

# ***FEBRUARY 2020***

Sunday	Monday	Tuesday	Wednesday	Thursday	Friday	Saturday
<div> <div> January 2020 <div> S M T W T F S <div> <div>1</div> <div>2</div> <div>3</div> <div>4</div> <div>5</div> <div>6</div> <div>7</div> <div>8</div> <div>9</div> <div>10</div> <div>11</div> <div>12</div> <div>13</div> <div>14</div> <div>15</div> <div>16</div> <div>17</div> <div>18</div> <div>19</div> <div>20</div> <div>21</div> <div>22</div> <div>23</div> <div>24</div> <div>25</div> <div>26</div> <div>27</div> <div>28</div> <div>29</div> <div>30</div> <div>31</div> </div> </div> </div> <div> March 2020 <div> S M T W T F S <div> <div>1</div> <div>2</div> <div>3</div> <div>4</div> <div>5</div> <div>6</div> <div>7</div> <div>8</div> <div>9</div> <div>10</div> <div>11</div> <div>12</div> <div>13</div> <div>14</div> <div>15</div> <div>16</div> <div>17</div> <div>18</div> <div>19</div> <div>20</div> <div>21</div> <div>22</div> <div>23</div> <div>24</div> <div>25</div> <div>26</div> <div>27</div> <div>28</div> <div>29</div> <div>30</div> <div>31</div> </div> </div> </div> </div> <div> WINTER CONFERENCES WILL BE HELD THE WEEKS OF FEBRUARY 10 AND 17 Visit <a href="http://SpringLakeParkSchools.org">SpringLakeParkSchools.org</a> for your school's schedule. </div>						<b>1</b> HS spring sports online registration opens
<b>2</b>	<b>3</b>	<b>4</b>	<b>5</b>	<b>6</b>	<b>7</b>	<b>8</b>
<b>9</b>	<b>10</b>	<b>11</b> School Board Regular Meeting, 7 p.m., DSC	<b>12</b>	<b>13</b> No school or PS Staff professional workday Child care open	<b>14</b> No school or PS Staff professional workday Child care open	<b>15</b>
<b>16</b>	<b>17</b> No school, PS Child care closed DSC closed	<b>18</b>	<b>19</b>	<b>20</b>	<b>21</b>	<b>22</b>
<b>23</b>	<b>24</b>	<b>25</b>	<b>26</b>	<b>27</b> Grades 7-8 theater, <i>The Wizard of Oz</i> , FAC	<b>28</b> Grades 7-8 theater, <i>The Wizard of Oz</i> , FAC	<b>29</b> Grades 7-8 theater, <i>The Wizard of Oz</i> , FAC  16th Annual Panther Foundation Gala

**CALENDAR KEY** **CV** Centerview Elementary **DSC** District Services Center **ECFE** Early Childhood Family Education **FAC** Fine Arts Center **HS** Spring Lake Park High School **LH** Lighthouse School  
**NP** Northpoint Elementary **PS** Preschool **PT** Park Terrace Elementary **WC** Woodcrest Spanish Immersion **WW** Westwood Intermediate and Middle School  
Visit [SpringLakeParkSchools.org/calendar](http://SpringLakeParkSchools.org/calendar) for a calendar specific to your school or program.





**SPRING LAKE PARK SCHOOLS**

## ***We are Panther Proud!***

*We offer the AVID (Advancement Via Individual Determination) program for grades 6-12 students. AVID helps prepare students to be successful in college and other post-secondary opportunities.*

*Centerview Elementary, our district's newest elementary school, opened in fall 2018 and offers many flexible learning spaces that allow teachers to personalize learning for each student.*

*Every student in the district has use of a digital device - mostly iPads - with a goal of improving student engagement and personalizing learning for each student.*

*Our comprehensive assessment program balances assessments FOR learning, which are used when learning is occurring, and assessments OF learning, which are used after learning has happened to assess what each student has learned. Both types of assessments are used to improve student learning.*

# **MARCH 2020**



<i>Sunday</i>	<i>Monday</i>	<i>Tuesday</i>	<i>Wednesday</i>	<i>Thursday</i>	<i>Friday</i>	<i>Saturday</i>																																																																																				
<b>1</b>	<b>2</b> School Board Regular Meeting, 7 p.m., DSC MCA reading and math assessment window opens MCA science assessment window opens MTAS reading, math and science assessment window opens	<b>3</b>	<b>4</b>	<b>5</b> End of Trimester 2	<b>6</b> No school or PS Staff professional workday Child care open	<b>7</b>																																																																																				
<b>8</b>	<b>9</b>	<b>10</b>	<b>11</b>	<b>12</b>	<b>13</b>	<b>14</b>																																																																																				
	<i>SPRING BREAK</i>   No school, PS or ECFE   Child care open																																																																																									
<b>15</b>	<b>16</b> No school or PS Staff professional workday Child care open	<b>17</b>	<b>18</b>	<b>19</b>	<b>20</b>	<b>21</b>																																																																																				
<b>22</b>	<b>23</b>	<b>24</b> ACT plus writing exam, grade 11	<b>25</b>	<b>26</b>	<b>27</b>	<b>28</b>																																																																																				
<b>29</b>	<b>30</b> AAPPL assessment window testing opens Winter ACT Aspire assessment window opens, grades 8, 9 and 10	<b>31</b>	<div> <i>February 2020</i> <table> <tr><td>S</td><td>M</td><td>T</td><td>W</td><td>T</td><td>F</td><td>S</td></tr> <tr><td></td><td></td><td></td><td></td><td></td><td></td><td>1</td></tr> <tr><td>2</td><td>3</td><td>4</td><td>5</td><td>6</td><td>7</td><td>8</td></tr> <tr><td>9</td><td>10</td><td>11</td><td>12</td><td>13</td><td>14</td><td>15</td></tr> <tr><td>16</td><td>17</td><td>18</td><td>19</td><td>20</td><td>21</td><td>22</td></tr> <tr><td>23</td><td>24</td><td>25</td><td>26</td><td>27</td><td>28</td><td>29</td></tr> </table> </div> <div> <i>April 2020</i> <table> <tr><td>S</td><td>M</td><td>T</td><td>W</td><td>T</td><td>F</td><td>S</td></tr> <tr><td></td><td></td><td></td><td></td><td>1</td><td>2</td><td>3</td></tr> <tr><td>4</td><td>5</td><td>6</td><td>7</td><td>8</td><td>9</td><td>10</td></tr> <tr><td>11</td><td>12</td><td>13</td><td>14</td><td>15</td><td>16</td><td>17</td></tr> <tr><td>18</td><td>19</td><td>20</td><td>21</td><td>22</td><td>23</td><td>24</td></tr> <tr><td>25</td><td>26</td><td>27</td><td>28</td><td>29</td><td>30</td><td></td></tr> </table> </div>				S	M	T	W	T	F	S							1	2	3	4	5	6	7	8	9	10	11	12	13	14	15	16	17	18	19	20	21	22	23	24	25	26	27	28	29	S	M	T	W	T	F	S					1	2	3	4	5	6	7	8	9	10	11	12	13	14	15	16	17	18	19	20	21	22	23	24	25	26	27	28	29	30	
S	M	T	W	T	F	S																																																																																				
						1																																																																																				
2	3	4	5	6	7	8																																																																																				
9	10	11	12	13	14	15																																																																																				
16	17	18	19	20	21	22																																																																																				
23	24	25	26	27	28	29																																																																																				
S	M	T	W	T	F	S																																																																																				
				1	2	3																																																																																				
4	5	6	7	8	9	10																																																																																				
11	12	13	14	15	16	17																																																																																				
18	19	20	21	22	23	24																																																																																				
25	26	27	28	29	30																																																																																					

**CALENDAR KEY** **CV** Centerview Elementary **DSC** District Services Center **ECFE** Early Childhood Family Education **FAC** Fine Arts Center **HS** Spring Lake Park High School **LH** Lighthouse School  
**NP** Northpoint Elementary **PS** Preschool **PT** Park Terrace Elementary **WC** Woodcrest Spanish Immersion **WW** Westwood Intermediate and Middle School  
 Visit [SpringLakeParkSchools.org/calendar](http://SpringLakeParkSchools.org/calendar) for a calendar specific to your school or program.



### ***We are Panther Proud!***

*We are working to make STEM (Science, Technology, Engineering and Math) a systemic approach to learning. STEM allows students to draw connections across all content areas and teaches students how to think differently and use critical thinking through hands-on activities.*

*We are working to personalize learning for each student with a focus on learning, rather than teaching, and allowing students to flexibly achieve each learning outcome.*

*All K-5 students have a daily reading block of 120 minutes with the first half focused on grade-level learning targets and the second half focused on more personalized learning delivered in groups of five or 10 students.*

*Class sizes in our district are lower than neighboring districts and we use additional teachers and academic specialists in classrooms to personalize learning for each student.*

# ***APRIL 2020***

Sunday	Monday	Tuesday	Wednesday	Thursday	Friday	Saturday
<u>March 2020</u> S M T W T F S 1 2 3 4 5 6 7 8 9 10 11 12 13 14 15 16 17 18 19 20 21 22 23 24 25 26 27 28 29 30 31			1	2	3	4
5	6	7 ACT plus writing makeup exam, grade 11	8	9 No ECFE	10 No school, ECFE or PS DSC closed Child care closed	11
12	13 No school or PS Staff professional workday Child care open	14 School Board Regular Meeting, 7 p.m., DSC	15	16	17 HS theater, <i>Seussical</i> , FAC	18 HS theater, <i>Seussical</i> , FAC
19	20	21	22	23	24 HS theater, <i>Seussical</i> , FAC	25 HS theater, <i>Seussical</i> , FAC
26 HS theater, <i>Seussical</i> , FAC	27 Spring MAP assessment window opens, grades 2-8	28	29	30	<u>May 2020</u> S M T W T F S 1 2 3 4 5 6 7 8 9 10 11 12 13 14 15 16 17 18 19 20 21 22 23 24 25 26 27 28 29 30 31	

**CALENDAR KEY** CV Centerview Elementary DSC District Services Center ECFE Early Childhood Family Education FAC Fine Arts Center HS Spring Lake Park High School LH Lighthouse School NP Northpoint Elementary PS Preschool PT Park Terrace Elementary WC Woodcrest Spanish Immersion WW Westwood Intermediate and Middle School  
 Visit [SpringLakeParkSchools.org/calendar](http://SpringLakeParkSchools.org/calendar) for a calendar specific to your school or program.





## ***We are Panther Proud!***

*Our high school students are highly engaged in the life of their school with about 85 percent of students participating in Panther athletics or activities.*

*Our curriculum is built around Essential Learning Outcomes (ELO) that define what we expect each student to know, understand and be able to do in each curricular area and at each grade level.*

*We place a high priority on professional learning so our teachers and other staff can continuously improve learning for our students.*

*Our district is supported by the community-based Panther Foundation, which has raised and awarded more than \$1.5 million to our district since its creation in 2004.*

*Our district is in solid financial condition and is one of only a few districts in the state that has not made budget reductions in the past several years.*

# ***MAY 2020***

Sunday	Monday	Tuesday	Wednesday	Thursday	Friday	Saturday																																																																																				
<p><i>April 2020</i></p> <table> <tr><td>S</td><td>M</td><td>T</td><td>W</td><td>T</td><td>F</td><td>S</td></tr> <tr><td></td><td></td><td></td><td>1</td><td>2</td><td>3</td><td>4</td></tr> <tr><td>5</td><td>6</td><td>7</td><td>8</td><td>9</td><td>10</td><td>11</td></tr> <tr><td>12</td><td>13</td><td>14</td><td>15</td><td>16</td><td>17</td><td>18</td></tr> <tr><td>19</td><td>20</td><td>21</td><td>22</td><td>23</td><td>24</td><td>25</td></tr> <tr><td>26</td><td>27</td><td>28</td><td>29</td><td>30</td><td></td><td></td></tr> </table>		S	M	T	W	T	F	S				1	2	3	4	5	6	7	8	9	10	11	12	13	14	15	16	17	18	19	20	21	22	23	24	25	26	27	28	29	30			<p><i>June 2020</i></p> <table> <tr><td>S</td><td>M</td><td>T</td><td>W</td><td>T</td><td>F</td><td>S</td></tr> <tr><td></td><td>1</td><td>2</td><td>3</td><td>4</td><td>5</td><td>6</td></tr> <tr><td>7</td><td>8</td><td>9</td><td>10</td><td>11</td><td>12</td><td>13</td></tr> <tr><td>14</td><td>15</td><td>16</td><td>17</td><td>18</td><td>19</td><td>20</td></tr> <tr><td>21</td><td>22</td><td>23</td><td>24</td><td>25</td><td>26</td><td>27</td></tr> <tr><td>28</td><td>29</td><td>30</td><td></td><td></td><td></td><td></td></tr> </table>		S	M	T	W	T	F	S		1	2	3	4	5	6	7	8	9	10	11	12	13	14	15	16	17	18	19	20	21	22	23	24	25	26	27	28	29	30						<p><b>1</b></p> <p>MCA reading and math assessment window closes</p> <p>MTAS reading, math and science assessment window closes</p>	<p><b>2</b></p> <p>HS Prom</p>
S	M	T	W	T	F	S																																																																																				
			1	2	3	4																																																																																				
5	6	7	8	9	10	11																																																																																				
12	13	14	15	16	17	18																																																																																				
19	20	21	22	23	24	25																																																																																				
26	27	28	29	30																																																																																						
S	M	T	W	T	F	S																																																																																				
	1	2	3	4	5	6																																																																																				
7	8	9	10	11	12	13																																																																																				
14	15	16	17	18	19	20																																																																																				
21	22	23	24	25	26	27																																																																																				
28	29	30																																																																																								
<b>3</b>	<p><b>4</b></p> <p>AP Exams begin</p> <p>AP Exam, Government and Politics, 8 a.m.</p>	<p><b>5</b></p> <p>AP Exam, Calculus AB/BC, 8 a.m.</p> <p>AP Exam, Human Geography, noon</p>	<p><b>6</b></p> <p>AP Exam, English Literature and Composition, 8 a.m.</p>	<p><b>7</b></p> <p>AP Exam, Chemistry, 8 a.m.</p> <p>AP Exam, Physics 1: Algebra Based, noon</p>	<p><b>8</b></p> <p>MCA science assessment window closes</p> <p>AP Exam, U.S. History, 8 a.m.</p> <p>AP Exam, Studio Art, noon</p>	<b>9</b>																																																																																				
<b>10</b>	<p><b>11</b></p> <p>AP Exam, Biology, 8 a.m.</p>	<p><b>12</b></p> <p>School Board Regular Meeting, 7 p.m., DSC</p> <p>AP Exam, Spanish Language, 8 a.m.</p> <p>AP Exam, Psychology, noon</p>	<p><b>13</b></p> <p>AP Exam, English Language and Composition, 8 a.m.</p>	<p><b>14</b></p> <p>AP Exam, World History, 8 a.m.</p>	<p><b>15</b></p> <p>AP Exam, Computer Science Principles, 8 a.m.</p> <p>AP Exam, Statistics, noon</p> <p>AP Exams end</p>	<b>16</b>																																																																																				
<b>17</b>	<p><b>18</b></p> <p>Last week of PS</p>	<p><b>19</b></p> <p>Last week of PS</p>	<p><b>20</b></p> <p>Last week of PS</p>	<p><b>21</b></p> <p>Last week of PS</p>	<p><b>22</b></p> <p>Last week of PS</p> <p>Winter ACT Aspire assessment window closes, grades 8, 9 and 10</p>	<b>23</b>																																																																																				
<p><b>24</b></p> <p><b>31</b></p>	<p><b>25</b></p> <p>No school, PS or ECFE</p> <p>Child care closed</p> <p>DSC closed</p>	<b>26</b>	<b>27</b>	<b>28</b>	<p><b>29</b></p> <p>AAPPL assessment window testing closes</p> <p>Spring MAP assessment window closes, grades 2-8</p>	<b>30</b>																																																																																				

**CALENDAR KEY** **CV** Centerview Elementary **DSC** District Services Center **ECFE** Early Childhood Family Education **FAC** Fine Arts Center **HS** Spring Lake Park High School **LH** Lighthouse School  
**NP** Northpoint Elementary **PS** Preschool **PT** Park Terrace Elementary **WC** Woodcrest Spanish Immersion **WW** Westwood Intermediate and Middle School  
 Visit [SpringLakeParkSchools.org/calendar](http://SpringLakeParkSchools.org/calendar) for a calendar specific to your school or program.



## ***We are Panther Proud!***

*Our “Make Your Mark” initiative strives to promote and provide a welcoming environment and customer service experience for parents and the community.*

*The district’s award-winning website has been recognized for its ease of navigation and useful content for both current parents and new families.*

*Every district school is staffed with “continuous improvement and innovation coaches” who partner with our teachers to regularly improve and share best practices.*

*Our district has earned the Certificate of Excellence in Financial Reporting from the Association of School Business Officials International for more than 12 years in a row.*

*Teachers throughout the district are using technology to connect students with experts and experiences throughout the world.*

# ***JUNE 2020***



<i>Sunday</i>	<i>Monday</i>	<i>Tuesday</i>	<i>Wednesday</i>	<i>Thursday</i>	<i>Friday</i>	<i>Saturday</i>																																																																																											
	<b>1</b>	<b>2</b>	<b>3</b>	<b>4</b>	<b>5</b> Last day of school End of Trimester 3 HS graduation After-school child care closed	<b>6</b>																																																																																											
<b>7</b>	<b>8</b> Staff professional workday Child care closed	<b>9</b> School Board Regular Meeting, 7 p.m., DSC Summer child care opens	<b>10</b>	<b>11</b>	<b>12</b>	<b>13</b>																																																																																											
<b>14</b>	<b>15</b>	<b>16</b>	<b>17</b>	<b>18</b>	<b>19</b>	<b>20</b>																																																																																											
<b>21</b>	<b>22</b>	<b>23</b>	<b>24</b>	<b>25</b>	<b>26</b>	<b>27</b>																																																																																											
<b>28</b>	<b>29</b>	<b>30</b>	<div> <div>May 2020</div> <table> <tr><td>S</td><td>M</td><td>T</td><td>W</td><td>T</td><td>F</td><td>S</td></tr> <tr><td></td><td></td><td></td><td></td><td></td><td>1</td><td>2</td></tr> <tr><td>3</td><td>4</td><td>5</td><td>6</td><td>7</td><td>8</td><td>9</td></tr> <tr><td>10</td><td>11</td><td>12</td><td>13</td><td>14</td><td>15</td><td>16</td></tr> <tr><td>17</td><td>18</td><td>19</td><td>20</td><td>21</td><td>22</td><td>23</td></tr> <tr><td>24</td><td>25</td><td>26</td><td>27</td><td>28</td><td>29</td><td>30</td></tr> <tr><td>31</td><td></td><td></td><td></td><td></td><td></td><td></td></tr> </table> </div> <div> <div>July 2020</div> <table> <tr><td>S</td><td>M</td><td>T</td><td>W</td><td>T</td><td>F</td><td>S</td></tr> <tr><td></td><td></td><td></td><td></td><td>1</td><td>2</td><td>3</td></tr> <tr><td>4</td><td>5</td><td>6</td><td>7</td><td>8</td><td>9</td><td>10</td></tr> <tr><td>11</td><td>12</td><td>13</td><td>14</td><td>15</td><td>16</td><td>17</td></tr> <tr><td>18</td><td>19</td><td>20</td><td>21</td><td>22</td><td>23</td><td>24</td></tr> <tr><td>25</td><td>26</td><td>27</td><td>28</td><td>29</td><td>30</td><td>31</td></tr> </table> </div>				S	M	T	W	T	F	S						1	2	3	4	5	6	7	8	9	10	11	12	13	14	15	16	17	18	19	20	21	22	23	24	25	26	27	28	29	30	31							S	M	T	W	T	F	S					1	2	3	4	5	6	7	8	9	10	11	12	13	14	15	16	17	18	19	20	21	22	23	24	25	26	27	28	29	30	31
S	M	T	W	T	F	S																																																																																											
					1	2																																																																																											
3	4	5	6	7	8	9																																																																																											
10	11	12	13	14	15	16																																																																																											
17	18	19	20	21	22	23																																																																																											
24	25	26	27	28	29	30																																																																																											
31																																																																																																	
S	M	T	W	T	F	S																																																																																											
				1	2	3																																																																																											
4	5	6	7	8	9	10																																																																																											
11	12	13	14	15	16	17																																																																																											
18	19	20	21	22	23	24																																																																																											
25	26	27	28	29	30	31																																																																																											

**CALENDAR KEY** **CV** Centerview Elementary **DSC** District Services Center **ECFE** Early Childhood Family Education **FAC** Fine Arts Center **HS** Spring Lake Park High School **LH** Lighthouse School  
**NP** Northpoint Elementary **PS** Preschool **PT** Park Terrace Elementary **WC** Woodcrest Spanish Immersion **WW** Westwood Intermediate and Middle School  
Visit [SpringLakeParkSchools.org/calendar](https://SpringLakeParkSchools.org/calendar) for a calendar specific to your school or program.



## ***We are Panther Proud!***

*As part of our ongoing commitment to effectively manage our finances, our board has approved bond refunding opportunities that saved residents about \$12 million in property taxes.*

*Our district continues to increase its support of families through our grades 6-12 dean model and student/family advocate positions, who bridge the gap between families and schools, and provide a link to community services.*

*Our district has developed a partnership with the National Sports Center (NSC) in Blaine to provide athletics and activities spaces for students and the community.*

*Our district residents have generously invested in our schools and have provided the funds necessary to maintain and update our facilities. All district schools have either been constructed or recently renovated in the past 10 years.*

# ***JULY 2020***

Sunday	Monday	Tuesday	Wednesday	Thursday	Friday	Saturday																																																																																													
<div>June 2020</div> <table><tr><td>S</td><td>M</td><td>T</td><td>W</td><td>T</td><td>F</td><td>S</td></tr><tr><td></td><td>1</td><td>2</td><td>3</td><td>4</td><td>5</td><td>6</td></tr><tr><td>7</td><td>8</td><td>9</td><td>10</td><td>11</td><td>12</td><td>13</td></tr><tr><td>14</td><td>15</td><td>16</td><td>17</td><td>18</td><td>19</td><td>20</td></tr><tr><td>21</td><td>22</td><td>23</td><td>24</td><td>25</td><td>26</td><td>27</td></tr><tr><td>28</td><td>29</td><td>30</td><td></td><td></td><td></td><td></td></tr></table>			S	M	T	W	T	F	S		1	2	3	4	5	6	7	8	9	10	11	12	13	14	15	16	17	18	19	20	21	22	23	24	25	26	27	28	29	30					<div>August 2020</div> <table><tr><td>S</td><td>M</td><td>T</td><td>W</td><td>T</td><td>F</td><td>S</td></tr><tr><td></td><td></td><td></td><td></td><td></td><td></td><td>1</td></tr><tr><td>2</td><td>3</td><td>4</td><td>5</td><td>6</td><td>7</td><td>8</td></tr><tr><td>9</td><td>10</td><td>11</td><td>12</td><td>13</td><td>14</td><td>15</td></tr><tr><td>16</td><td>17</td><td>18</td><td>19</td><td>20</td><td>21</td><td>22</td></tr><tr><td>23</td><td>24</td><td>25</td><td>26</td><td>27</td><td>28</td><td>29</td></tr><tr><td>30</td><td>31</td><td></td><td></td><td></td><td></td><td></td></tr></table>		S	M	T	W	T	F	S							1	2	3	4	5	6	7	8	9	10	11	12	13	14	15	16	17	18	19	20	21	22	23	24	25	26	27	28	29	30	31						1	2	3 DSC closed	4
S	M	T	W	T	F	S																																																																																													
	1	2	3	4	5	6																																																																																													
7	8	9	10	11	12	13																																																																																													
14	15	16	17	18	19	20																																																																																													
21	22	23	24	25	26	27																																																																																													
28	29	30																																																																																																	
S	M	T	W	T	F	S																																																																																													
						1																																																																																													
2	3	4	5	6	7	8																																																																																													
9	10	11	12	13	14	15																																																																																													
16	17	18	19	20	21	22																																																																																													
23	24	25	26	27	28	29																																																																																													
30	31																																																																																																		
5	6	7	8	9	10	11																																																																																													
12	13	14	15	16	17	18																																																																																													
19	20	21	22	23	24	25																																																																																													
26	27	28	29	30	31																																																																																														

**CALENDAR KEY** **CV** Centerview Elementary **DSC** District Services Center **ECFE** Early Childhood Family Education **FAC** Fine Arts Center **HS** Spring Lake Park High School **LH** Lighthouse School  
**NP** Northpoint Elementary **PS** Preschool **PT** Park Terrace Elementary **WC** Woodcrest Spanish Immersion **WW** Westwood Intermediate and Middle School  
*Visit [SpringLakeParkSchools.org/calendar](http://SpringLakeParkSchools.org/calendar) for a calendar specific to your school or program.*



# OUR STRATEGIC PLAN FOR THE FUTURE

The Spring Lake Park Schools' Strategic Plan for the Future is the roadmap that we follow in our continuing - and measurable - focus on success for all students. The strategic plan is developed and approved by the school board and provides overall direction for the district's work.

***Our District Purpose*** High expectations. High achievement for all. No excuses.

## ***Our Vision for the Future***

Spring Lake Park Schools will be a world-class learning community aligned around...

- Fostering personalized experiences so that each student feels valued, inspired, and has a sense of belonging,
- Resulting in college readiness, and the development of academic, life, and career skills so that each student has aspirations for success.

## ***Our District Values***

These values describe how we will work with our learners and each other:

### **Accountability**

- To fulfill one's roles and responsibilities and be responsive to the results.

### **Courage**

- Doing and saying the right thing at the right time in the right way despite challenge, adversity, or conflicting self interests.

### **Excellence**

- A relentless and intentional effort in continuous improvement.

### **Innovation**

- Purposeful, courageous, continuous improvement through research and action.

### **Integrity**

- Always aligning our actions with our values and beliefs.

### **Learning**

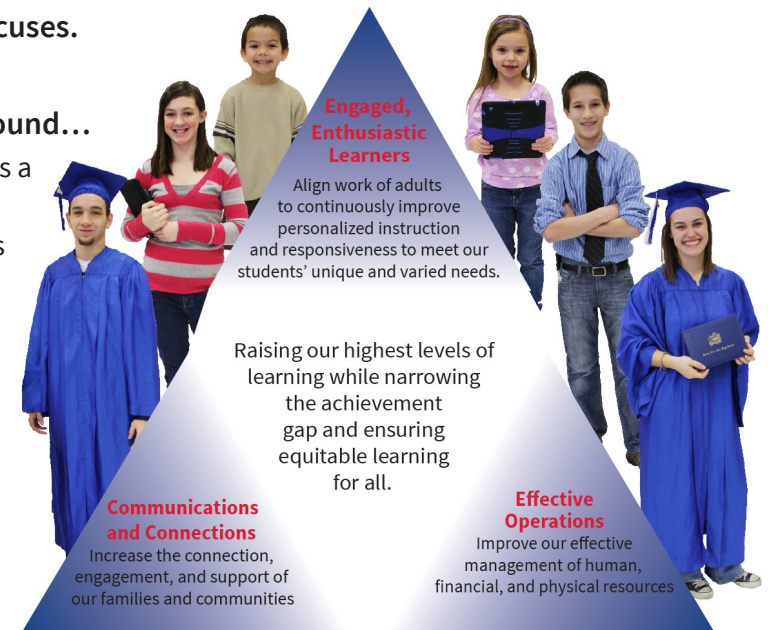
- Continuous, meaningful, and challenging effort that results in student success.

### **Respect**

- Listen to, accept, and value each individual in the school district and community.

### **Shared Responsibility**

- Working together interdependently and corroboratively, learning from one another, entrusting one's self interest to another, and taking ownership for our individual and collective actions and decisions.



## ***Our Strategic Anchors***

We will move towards our vision through a focus on continuous improvement, identifying annual and multi-year projects and initiatives within three Strategic Anchors. Each of these efforts are centered around raising our highest levels of learning while narrowing the achievement gap and ensuring equitable learning for all.

## ***Our over-arching goals for all planning and for providing a focus in moving towards our vision***

- We will achieve greater levels of coherence and alignment throughout the system.
- We will proactively position the school district for the future in all planning and decision-making.

# ***WHO WE ARE:*** ***SPRING LAKE PARK SCHOOLS***

***HIGH EXPECTATIONS. HIGH ACHIEVEMENT FOR ALL. NO EXCUSES.***

*We are a vibrant school community serving about 6,000 students from Blaine, Fridley and Spring Lake Park. There are many great things happening in our district – here are just a few things you will find in Spring Lake Park Schools.*

## ***STEM and Real-world Learning***

We continue to expand our STEM learning for each student in Spring Lake Park Schools. We are redesigning traditional learning experiences and transforming our classrooms to help our students become creators, designers, inventors, thinkers and leaders.



## ***Innovative and Personalized Learning***

Each student in Spring Lake Park Schools is known by name, strength, interest and need, leading to personalized student work and learning experiences.



## ***Career and College Readiness and 12x12***

Our vision to have every student prepared for college is bold and aspirational. We are collectively committed to designing engaging learning experiences that lead to each student earning 12 college credits by the end of 12th grade.



### *Innovation and Design*

We are creating a system that encourages teacher creativity and doing things differently. Teachers use our 3D Design model to design learning experiences that are meaningful, engaging and enhance student success.



### *Immersion Programming*

Students begin immersion programming at Woodcrest Spanish Immersion and can continue their learning immersion programming at Westwood and Spring Lake Park High School.



## ***WHO WE ARE: SPRING LAKE PARK SCHOOLS***



### *Focus on Literacy*

All elementary students in Spring Lake Park Schools spend 120 minutes each day on reading instruction with 60 minutes in smaller groups focused on specific student needs.



### *Student Involvement*

Through a wide variety of opportunities, more than 85 percent of Spring Lake Park High School students participate in one or more of the school's activities or athletics programs.





### *Low Class Sizes*

We continue to prioritize investing in teaching and specialist positions to maintain low class sizes. Our class sizes at all grades levels are among the lowest in the metro area and among neighboring districts.



### *Top-notch and State of the Art Facilities*

Our community has provided the necessary resources to invest in flexible learning spaces for our students. We have designed enriching learning environments that allow teachers to meet the varied needs and interests of students.

## ***WHO WE ARE: SPRING LAKE PARK SCHOOLS***

### *Outstanding Financial Management*

The school board and district administration have an ongoing commitment of effective management of fiscal resources, which has positioned the district well for the future.



### *Core Values*

As part of our Strategic Plan for the Future, we developed a set of core values to describe how we will work with our learners and each other.



# **AT A GLANCE:** *SPRING LAKE PARK SCHOOLS COMMUNITY EDUCATION*

*Spring Lake Park Schools Community Education is proud to offer outstanding programs and services to our community.*

## **EARLY CHILDHOOD FAMILY EDUCATION PROGRAMS (ECFE)**

Classes and activities are offered for families with young children from birth to kindergarten. ECFE helps build strong and healthy families. Classes are offered mornings, afternoons and evenings. Call 763-600-5900 for more information.

## **EARLY CHILDHOOD SCREENING**

Free health and developmental screening is available for children ages 3-5 to promote the health of children and their readiness for kindergarten. State law requires all children to be screened prior to entering kindergarten. Call 763-600-5900 for more information.

## **FOUR-STAR PARENT AWARE PRESCHOOL AND SCHOOL READINESS**

Our preschool and school readiness programs ensure that 3-5-year-old-children are ready to enter kindergarten. Licensed teachers make learning fun through creative experiences that teach skills in math, science, literacy, social interactions and the arts.

We offer two, three or four day-a-week classes in the morning or afternoon. Call 763-600-5900 for more information and enroll today.

Our Discovery Days program combines preschool with child care to meet the needs of your family. Learn more at [SpringLakeParkSchools.org/DiscoveryDays](http://SpringLakeParkSchools.org/DiscoveryDays).

We offer preschool programs at each elementary school and at the District Services Center.

## **CHILD CARE SERVICES**

Our child care program includes Learning Ventures before- and after-school care, Discovery Days for 3 and 4 year olds, school release day care, and summer programming. K-6 child care is offered at our elementary schools from 6:30 a.m.-6 p.m. Our experienced staff delivers fun activities that enrich and support your child's school day. Call 763-600-5050 for more information.

## **DRIVERS EDUCATION**

Classroom and behind-the-wheel instruction are offered throughout the year in partnership with Safeway Driving. Call 763-600-5050 for more information.

## **YOUTH ENRICHMENT**

After-school Adventures and Summer Adventures are enrichment programs for children pre-kindergarten through 6th grade, offered year-round. Watch for class announcements and registration materials to come home from school. Call 763-600-5050 for more information.

## **MIDDLE SCHOOL AND HIGH SCHOOL CLUBS**

A wide variety of clubs are available for middle and high school students. A sampling of the clubs include Ski and Snowboard Club, Bowling Club, Middle School Lacrosse, Ultimate Frisbee Club and "The Leos," a community service organization in collaboration with the Spring Lake Park Lions Club. Call 763-600-5050 for more information.

## **SLP THEATRE TICKETS**

Community Education is your one-stop destination to buy SLP Theater tickets. The theater calendar includes SLPHS fall play, spring musical, one act play, Westwood grades 7-8 fall play and spring musical and Westwood grades 5-6 production. Visit [SpringLakeParkSchools.org/ticketoffice](http://SpringLakeParkSchools.org/ticketoffice) for more information and to purchase tickets.

## **ATHLETIC CAMPS**

Camps for children of all ages are organized by high school varsity coaches for several activities including football, basketball, tennis, volleyball and swimming. Call 763-600-5055 for more information.

## **ADULT ENRICHMENT**

Enrichment programs for adults, such as online learning opportunities, technology, and fitness classes, are offered throughout the year. If you are interested in teaching an adult class, call us at 763-600-5055.

## **PANTHER FOUNDATION**

The Panther Foundation is a non-profit organization that partners and supports Spring Lake Park Schools' students and staff. Support for the foundation comes from special event fundraisers, community business sponsors and individual donors. All of the fundraising efforts fund grants initiated by staff, students and community members and district special projects. Visit [PantherFoundation.org](http://PantherFoundation.org) to learn how to get involved in the Annual Panther Carnival and 5K in September, the Gala in February and the Golf Fundraiser in June supporting Athletics and Activities.

## **FACILITY RENTALS**

Our state-of-the-art school district facilities are available for rental to the community, including our 600-seat Fine Arts Center, athletic fields and various multi-purpose rooms. Call 763-600-5054 for more information.

## **GED, AND BASIC SKILLS**

Free adult classes are offered in Basic Skills (math, reading, writing) English as a Second Language, GED (high school equivalency) and private tutoring. Morning and evening classes are offered at a variety of locations. Call Metro North at 763-783-4870 for more information.

**LEARN MORE ABOUT SLP COMMUNITY EDUCATION AT [SpringLakeParkSchools.org/CE](http://SpringLakeParkSchools.org/CE) OR BY CALLING 763-600-5050.**



# **STAY CONNECTED:** *DISTRICT, SCHOOL AND STUDENT NEWS AND INFORMATION*

*Spring Lake Park Schools publishes news and information on a weekly basis throughout the school year. Teachers also use several tools to track progress, assignments, attendance, grades and more. Here are some tools to help you stay in touch this school year.*

## **PARENT PORTAL**

Campus Parent Portal provides online access to secure and timely information about class schedules, attendance, report cards, and transcripts. Some of this information can also be found when you login to the mobile app. Visit Parent Portal at [SpringLakeParkSchools.org/ParentPortal](https://SpringLakeParkSchools.org/ParentPortal).

## **PARENT CONNECTIONS**

Every other Thursday throughout the school year, parents will receive a Parent Connections email containing district information, staff and student accomplishments, upcoming events, Community Education information and more.

## **SCHOOL NEWSLETTERS**

Each school will send an email newsletter home on most weeks throughout the school year. To ensure you receive these emails, please update student and family contact information in the Campus Parent Portal system. You can make updates at [SpringLakeParkSchools.org/ParentPortal](https://SpringLakeParkSchools.org/ParentPortal).

## **SCHOOLGY**

Spring Lake Park Schools uses Schoology, an integrated learning management solution that helps track and improve student outcomes as well as enhance student engagement. Schoology allows our students to connect both at school and from home. Parents also have login information that allows access to Schoology. Learn more about Schoology at [SpringLakeParkSchools.org/Schoology](https://SpringLakeParkSchools.org/Schoology).

## **SOCIAL MEDIA**

Follow us on Facebook, Flickr, Instagram, Twitter and YouTube. To view the official social media accounts for the district, schools, programs and activities visit [SpringLakeParkSchools.org/SocialMedia](https://SpringLakeParkSchools.org/SocialMedia).

## **WEBSITE**

Visit [SpringLakeParkSchools.org](https://SpringLakeParkSchools.org) for student and staff accomplishments, district and school news, district and school calendars, contact information and more. Watch this fall for more information on the transition to our newly designed website.

*Learn more about how to Stay Connected at [SpringLakeParkSchools.org/news/stay-connected](https://SpringLakeParkSchools.org/news/stay-connected).*

FIND US ON



AND SHARE WHY YOU ARE  
**#SLPPANTHERPROUD!**







**SPRING LAKE PARK SCHOOLS**

**DISTRICT SERVICES CENTER**

Independent School District No. 16

1415 81st Avenue NE

Spring Lake Park, MN 55432



[SpringLakeParkSchools.org](http://SpringLakeParkSchools.org)

NON-PROFIT ORG.  
U.S. POSTAGE  
PAID  
TWIN CITIES, MN  
PERMIT 1174

**SPRING LAKE PARK SCHOOLS** PROUDLY SERVING  
**BLAINE | FRIDLEY | SPRING LAKE PARK**

